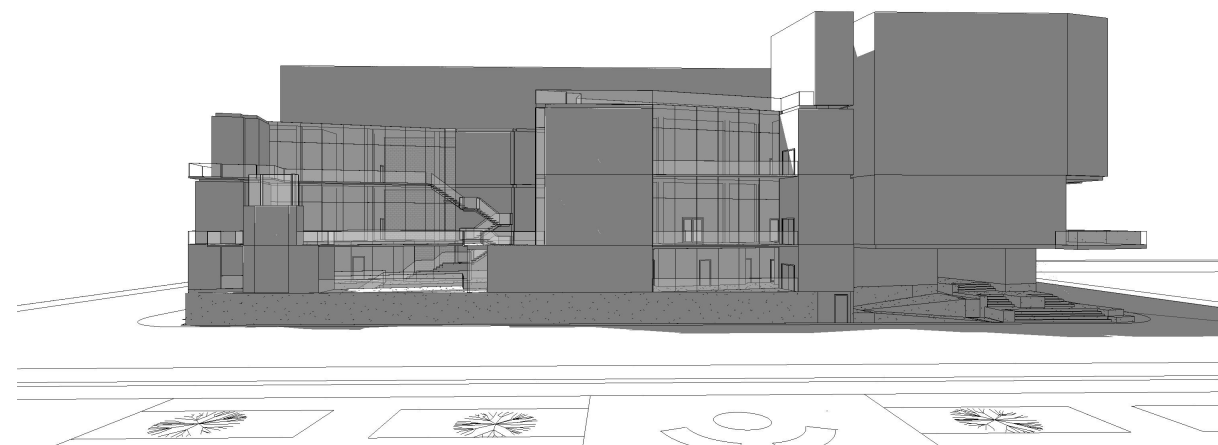
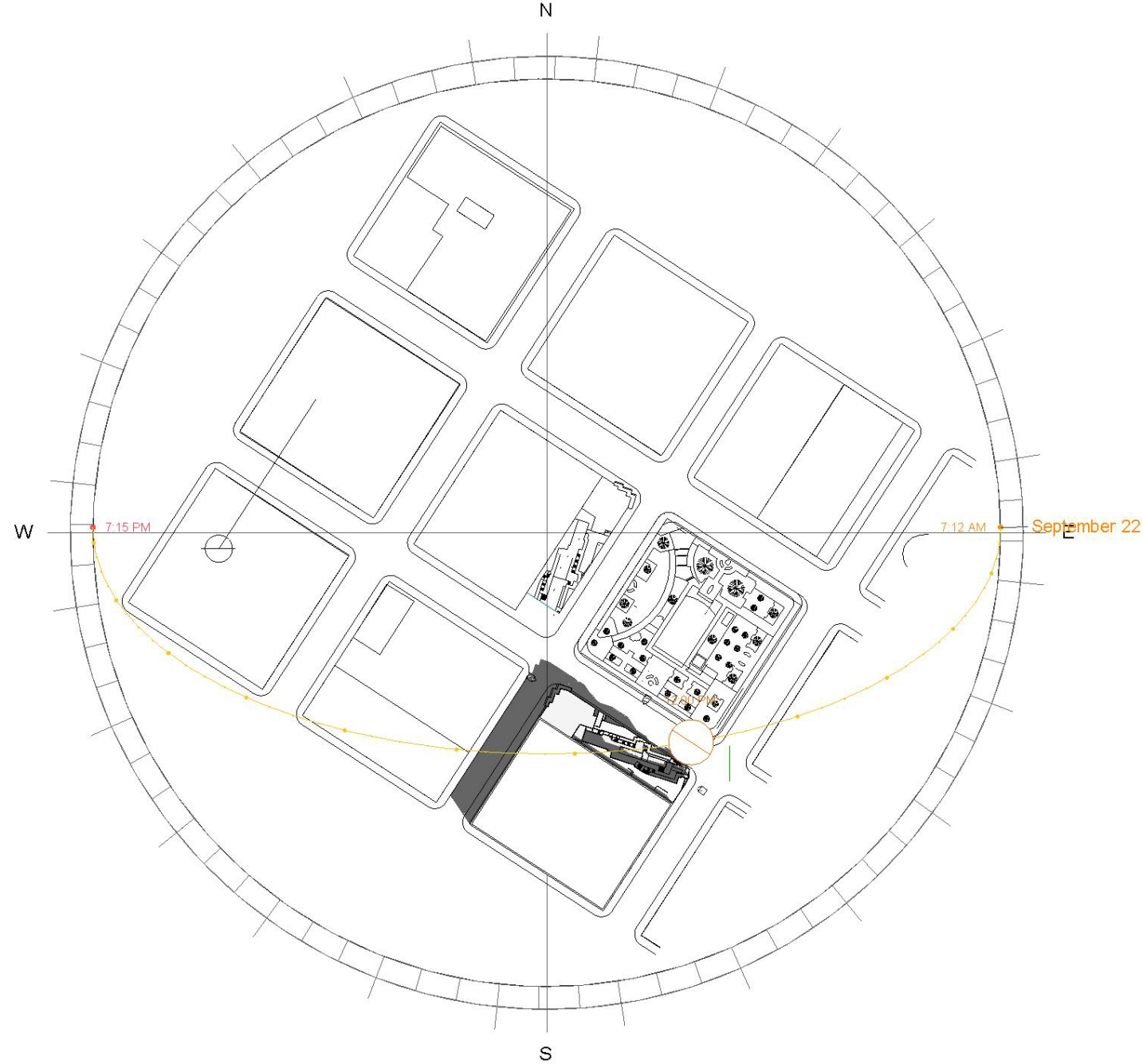


SUN AND SHADE ANALYSIS:

The sun and shade analysis covers the winter and summer solstice and the fall and spring equinox. Generally, the has no southern exposure. East and west exposures are minimized by the shallow depth of the site. The site's northern exposure is uncompromised. The site is oriented to the angle of Houston's CBD grid of a about 33 degrees. This increases morning sun from the east and minimizes the sun exposure to the west.

SEPTEMBER 22
12:00PM



Project Name:
3500 STUDIO PROJECT

City, Country
Houston, Texas USA

Latitude/Longitude/Elevation
29°45'46"N 95°22'59"W
43ft

DAVID NORTHCUTT BROWN
0398907

ARCH 3427
TECHNOLOGY 3

DOSSIER ONE